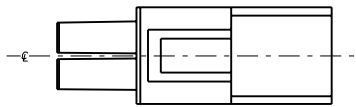
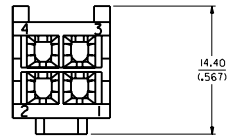
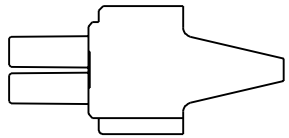
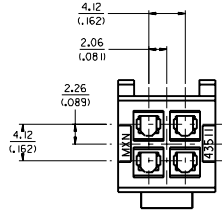
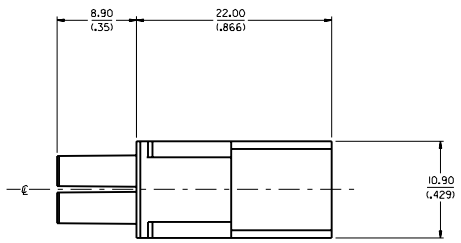


**NOTES:**

1. MATERIAL: POLYESTER (PBT), UN-FILLED, UL 94V-0. COLOR: BLACK
2. FINISH: NONE
3. PRODUCT SPEC. : PS-43510-002
4. ALL DIMENSIONS SHOWN FOR REFERENCE ONLY.
5. USES STANDARD 5556 AND 44485 MINI-FIT JR. FEMALE CRIMP TERMINALS.
6. PART MATES WITH 43514-0001 PLUG PDD.
7. PART TO BE USED WITH 43838-0\*\*\* RECEPTACLE SHROUD.  
(SEE SHROUD DRAWING FOR ASSEMBLY INFORMATION)



ADDED LEAD-INS EC NO. UCR 1999-0594 DRWING POL GAR 99/03/11 CHG. COMERC 99/03/15 APPR. COMERC 99/02/15	QUALITY SYMBOLS MAJOR $\nabla$ 0 CRITICAL $\nabla$ 0	GENERAL TOLERANCES: (UNLESS SPECIFIED) mm INCH 4 PLACES $\pm 0.15$ $\pm 0.004$ 3 PLACES $\pm 0.10$ $\pm 0.003$ 2 PLACES $\pm 0.08$ $\pm 0.002$ 1 PLACE $\pm 0.05$ $\pm 0.001$	SCALE: 4:1 DESIGN UNITS: <input checked="" type="checkbox"/> mm <input type="checkbox"/> INCH DRAWN BY & DATE: COMERC 97/10/06 CHECKED BY & DATE: COMERC 97/10/06 APPROVED BY & DATE: FRY 97/10/10	DIMENSIONS: <input checked="" type="checkbox"/> mm <input type="checkbox"/> INCH <input type="checkbox"/> mm ONLY <input type="checkbox"/> INCH ONLY	SHT 1 REV REVISE ON CAD ONLY
	CAD FILENAME: S4351101.DGN MATERIAL NO.: 43511-0001 DRAWING NO.: SD-43511-001	TITLE: MINI FIT JR. RECEPTACLE, 4 CIRCUIT, DUAL ROW COMPODRE SYSTEM MOLEX INCORPORATED		SHEET NO. 1 OF 1 SIZE D	
	DRAFT WHERE APPLICABLE MUST REMAIN WITHIN DIMENSIONS				
	THIS DRAWING CONTAINS INFORMATION THAT IS PROPRIETARY TO MOLEX INCORPORATED AND SHOULD NOT BE USED WITHOUT WRITTEN PERMISSION.				